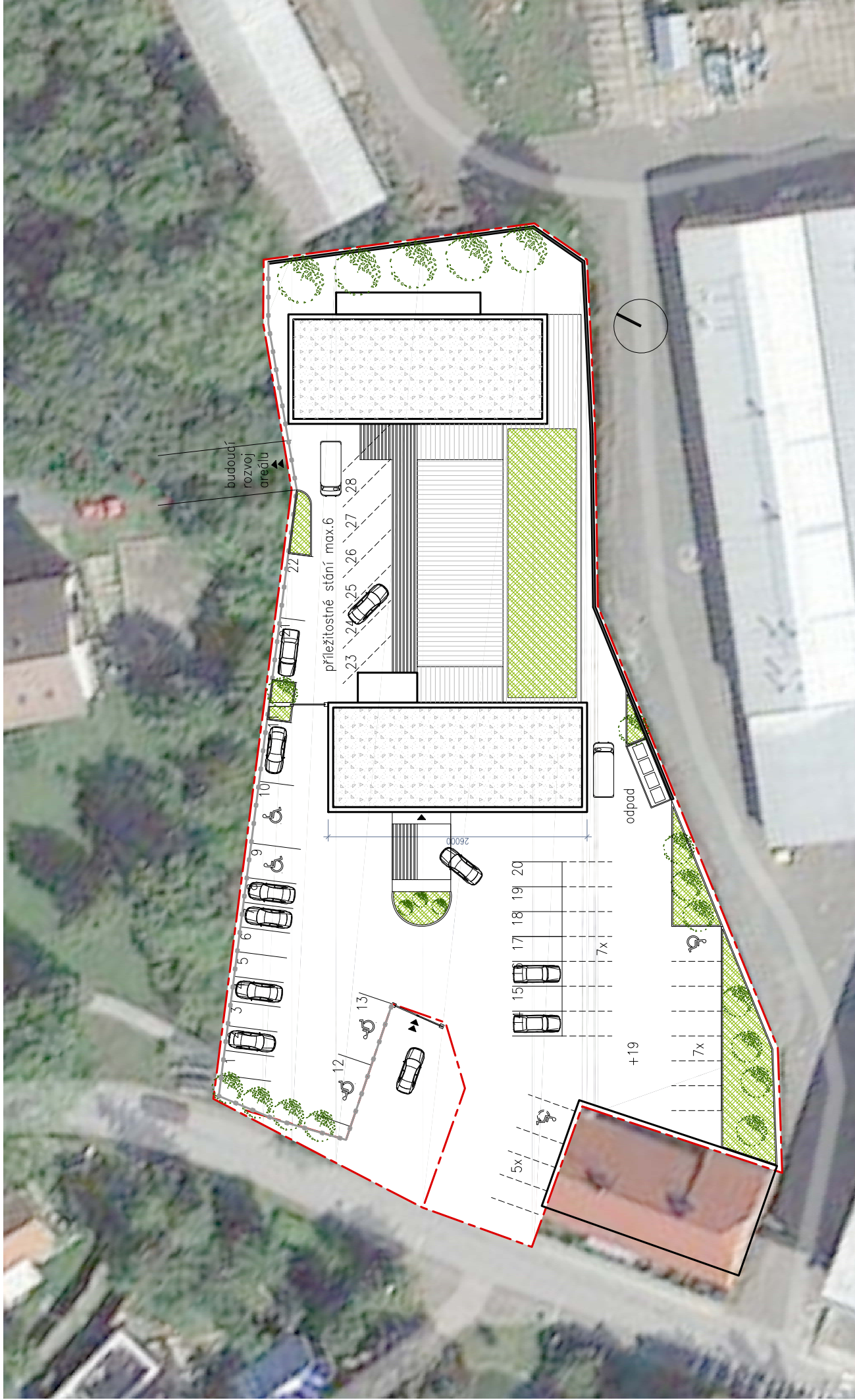
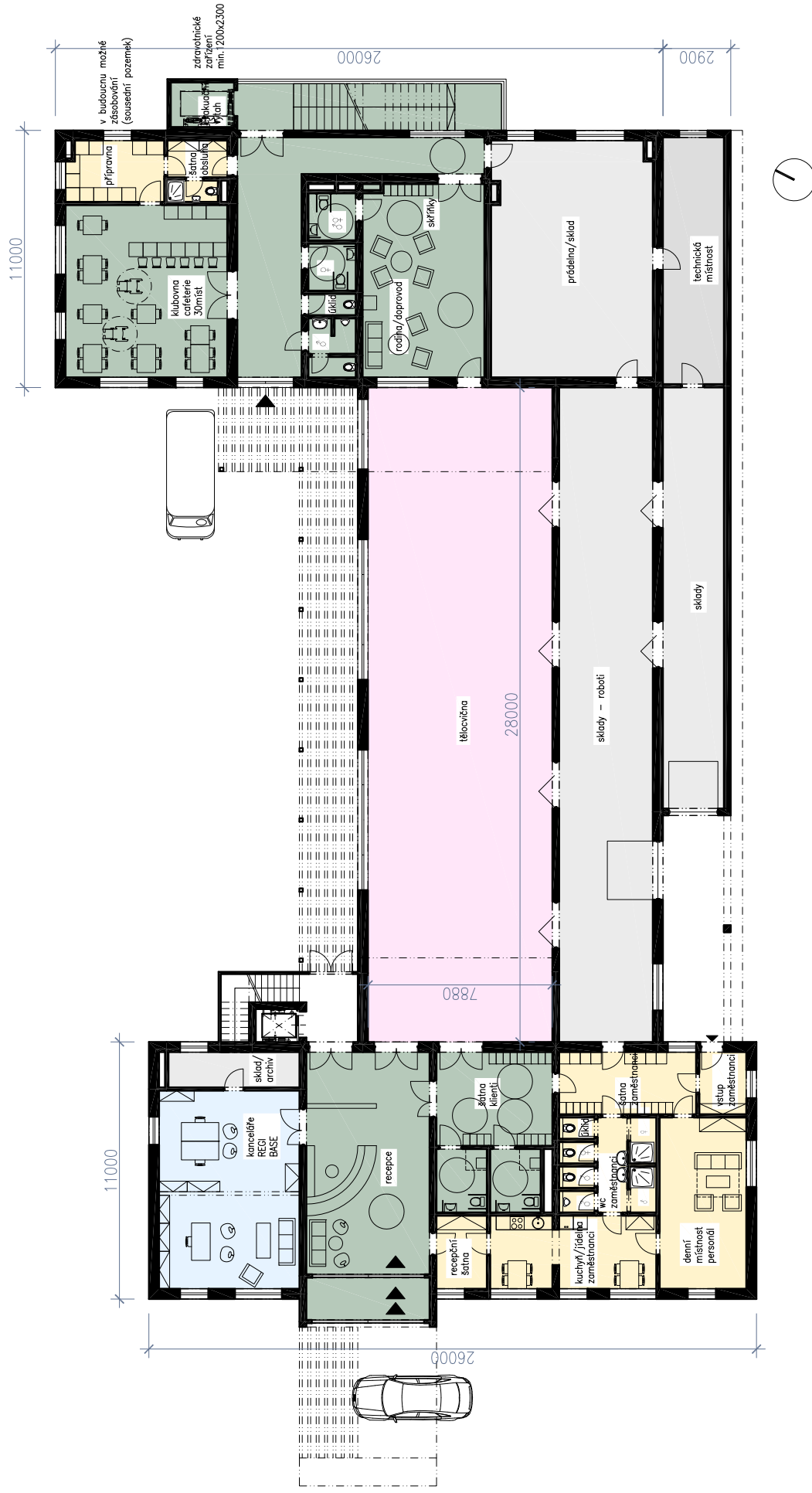


REGI BASE SVÉMYSLICE | PARTER - SITUACE | M 1: 500 | 001

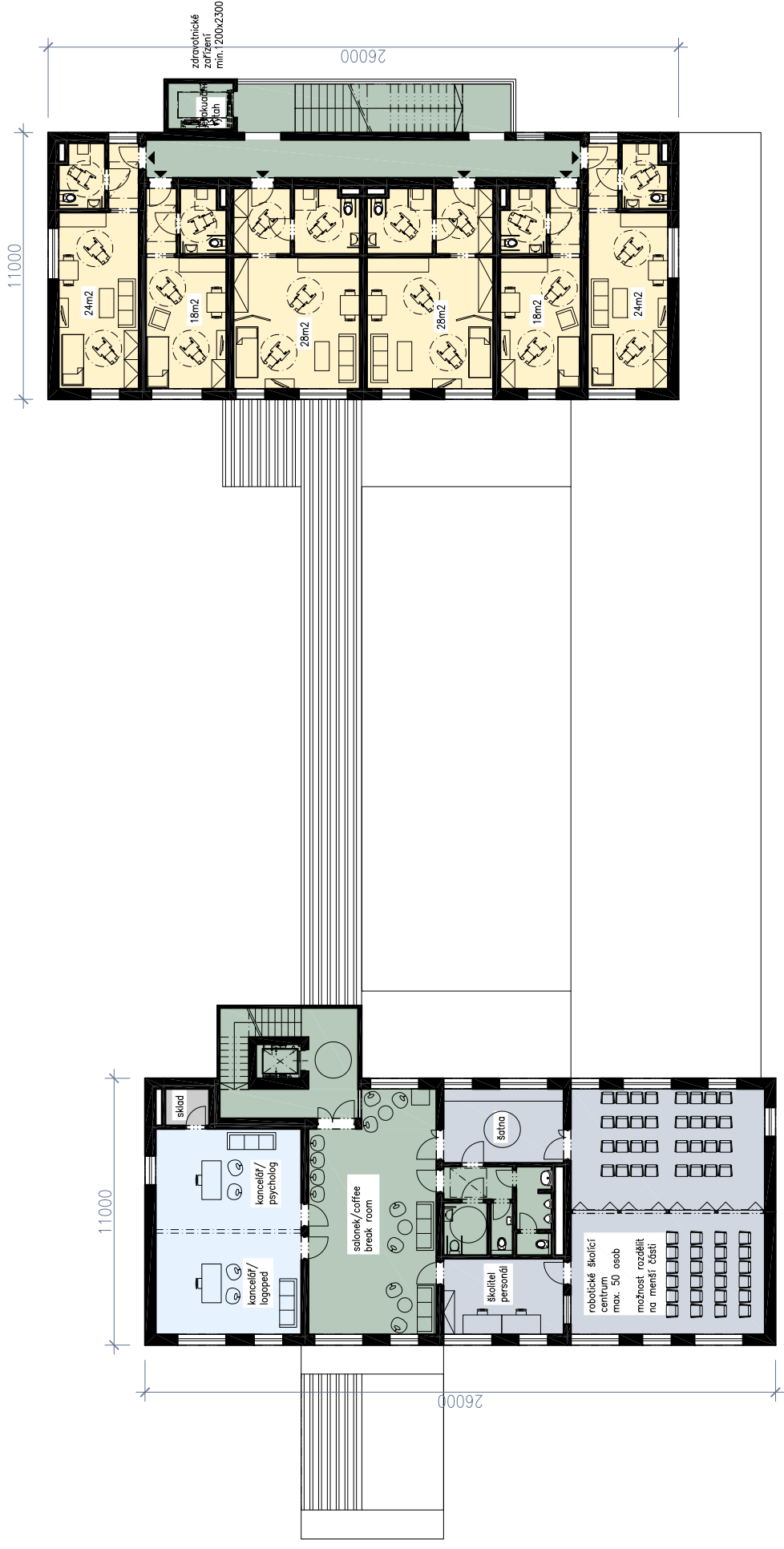


REGI BASE SVĚMYSLICE | PARTER - SITUACE S VEDLEJŠÍM POZEMKEM | M 1: 500 | 002

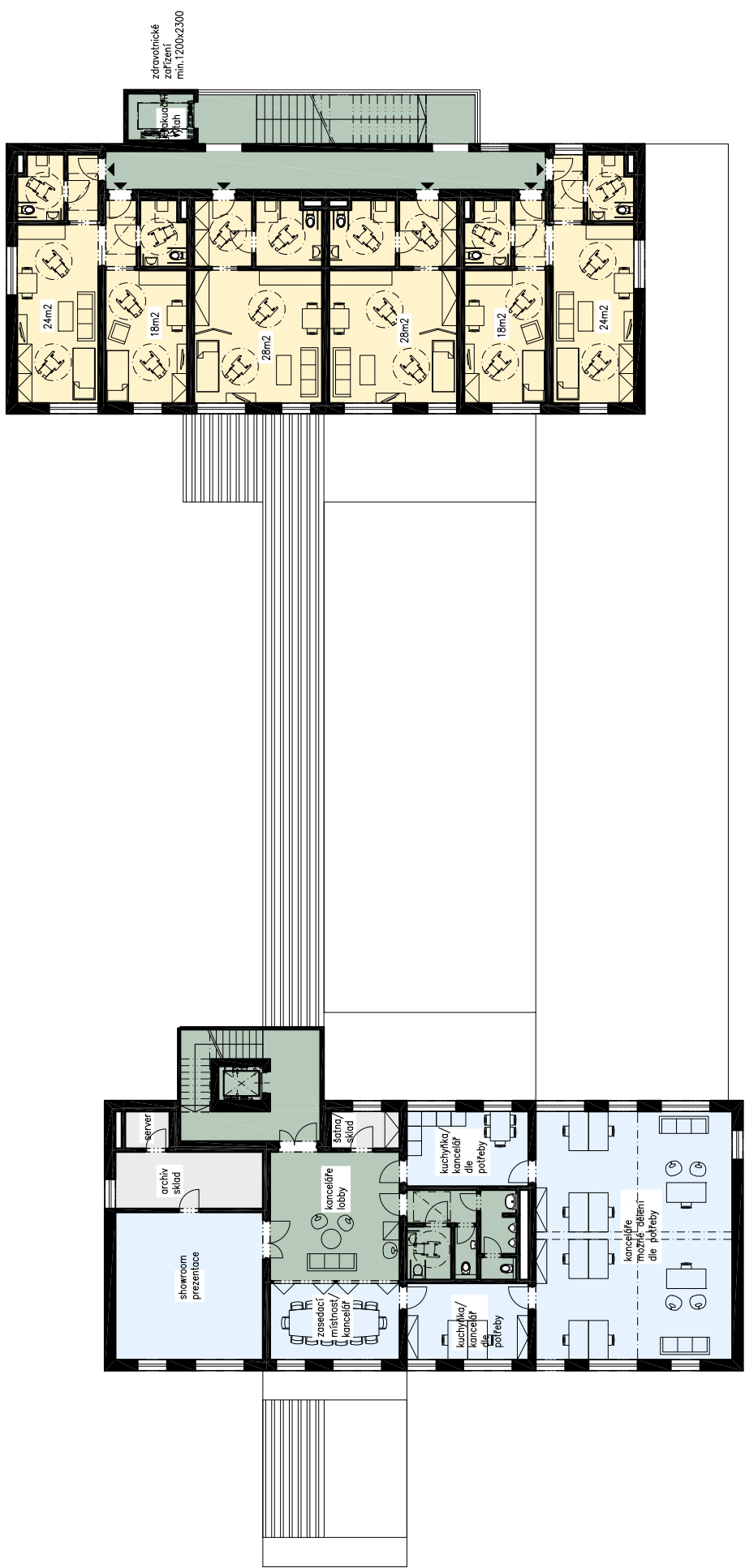




REGI BASE SVÉMYSLICE | PŮDORYS - CELEK 1.NP | M 1: 250 | 201

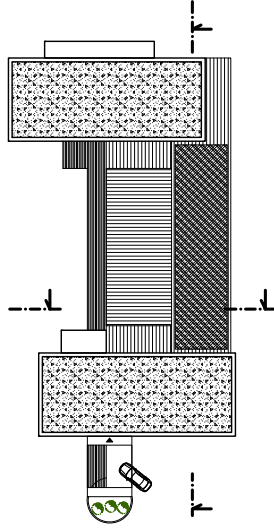
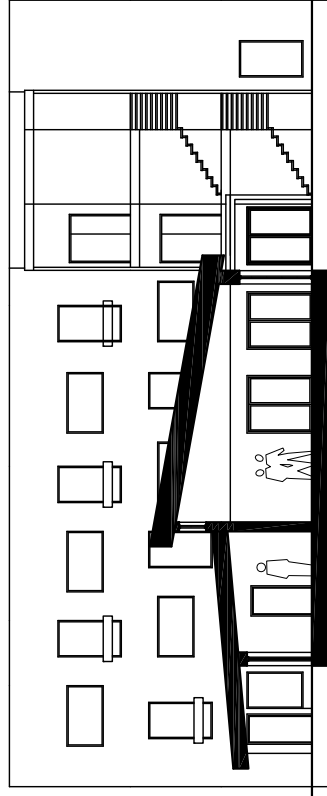
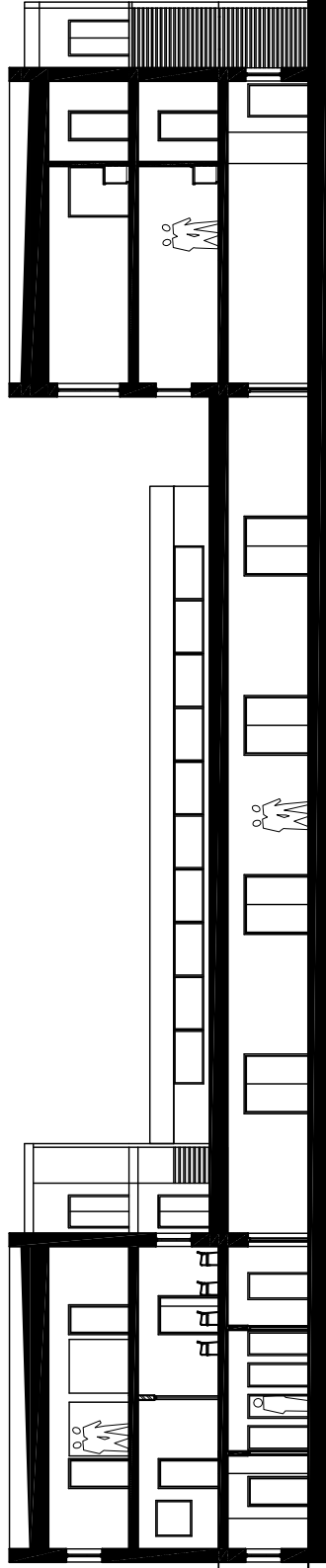


REGI BASE SVĚMYSLICE | PŮDORYS - CELEK 2.NP | M 1: 250 | 202



REGI BASE SVĚMYSLICE | PŮDORYS - CELEK 3.NP | M 1: 250 | 203





REGI BASE SVÉMYSLICE | ŘEZY | M 1: 250 | 401





REGI BASE SVĚMYSLICE | VIZUALIZACE | M 1: 250 | 202

RH-ARCH

Nekázanka 881/9, Praha 1, 110 00

T +420 2222 400 82

M +420 739 024 165

projekt@rh-arch.com, www.rh-arch.com

